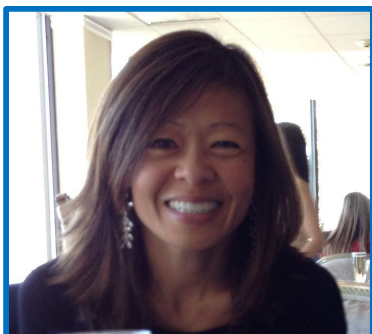




EPIC Long Island Welcomes New Board Member Carol Chen



GARDEN CITY, NY, July 11, 2013 — EPIC Long Island (formerly the Epilepsy Foundation of Long Island) welcomes Managing Director for PB Capital Corporation Carol Chen as a new member of its Board of Directors.

Ms. Chen has been in the financial services industry for 22 years, including over 16 years in commercial real estate banking focusing on lending, credit risk management, asset management, and restructuring/workouts. She has held many leadership positions, including Managing Director and Chief Credit Officer at PB Capital Corporation, a subsidiary of Deutsche Bank, responsible for PB Capital's U.S. commercial real estate business, as well as senior positions in commercial real estate at Barclays and UBS in New York.

A native New Yorker, Ms. Chen attended Cornell University where she earned a Bachelor of Science degree and was a Dean's Scholar. She is also a Chartered Financial Analyst.

Ms. Chen has been active in many charitable organizations, including Minds Matter, Good Dog Foundation, and Cross-Cultural Solutions and currently serves on the Board of Directors of Leake and Watts, a not-for-profit social services agency based in Yonkers, NY.

“We are very pleased to welcome Carol Chen to our family,” said Executive Director Thomas M. Hopkins. “Her deep commitment to serving the community is among her many strong qualities that EPIC Long Island seeks in its leaders.”

EPIC Long Island provides many services to people with epilepsy, developmental disabilities and mental illness. EPIC offers a Day Habilitation program; operates residential programs across Nassau and Suffolk counties; a Community Services program that provides Medicaid Service Coordination, Respite, and Residential Habilitation; and clinics that provide comprehensive services to persons with epilepsy, developmental disabilities, and mental illnesses. In addition, through its Community Education and Outreach Programs, the EPIC LI is committed to educating the public, teachers, health care professionals, and businesses about epilepsy; and serves as an advocate for those

with epilepsy. All of its programs are designed to help people reach their full potential and enhance their sense of self-esteem.

About EPIC Long Island

EPIC Long Island began in 1953 with a small group of parents whose mission was to help children with epilepsy lead productive lives. Sixty years later, the organization has fulfilled that promise, with 15 residences, two clinics, dozens of programs, and more than 11,000 individuals served. Today, EPIC LI looks toward a bright future as it broadens its mission to offer more social and health services across Long Island.

EPIC LI has grown to serve not only individuals with epilepsy, but also those with developmental disabilities and mental health challenges. While epilepsy is at its core, the organization offers a spectrum of superior services that also serves individuals and families with different needs. EPIC Long Island's mission is to enrich the lives of those they serve through quality care, a broad range of services and an unwavering commitment to excellence. For more information, please visit <http://EPICLI.org>.